

SECTION THREE - ENLARGED PHOTOGRAPH SIMULATIONS FOR FURTHER CLARIFICATION OF
TURBINE LOCATIONS

LONG GULLY WIND FARM MAY 2009 JOB NUMBER 2700







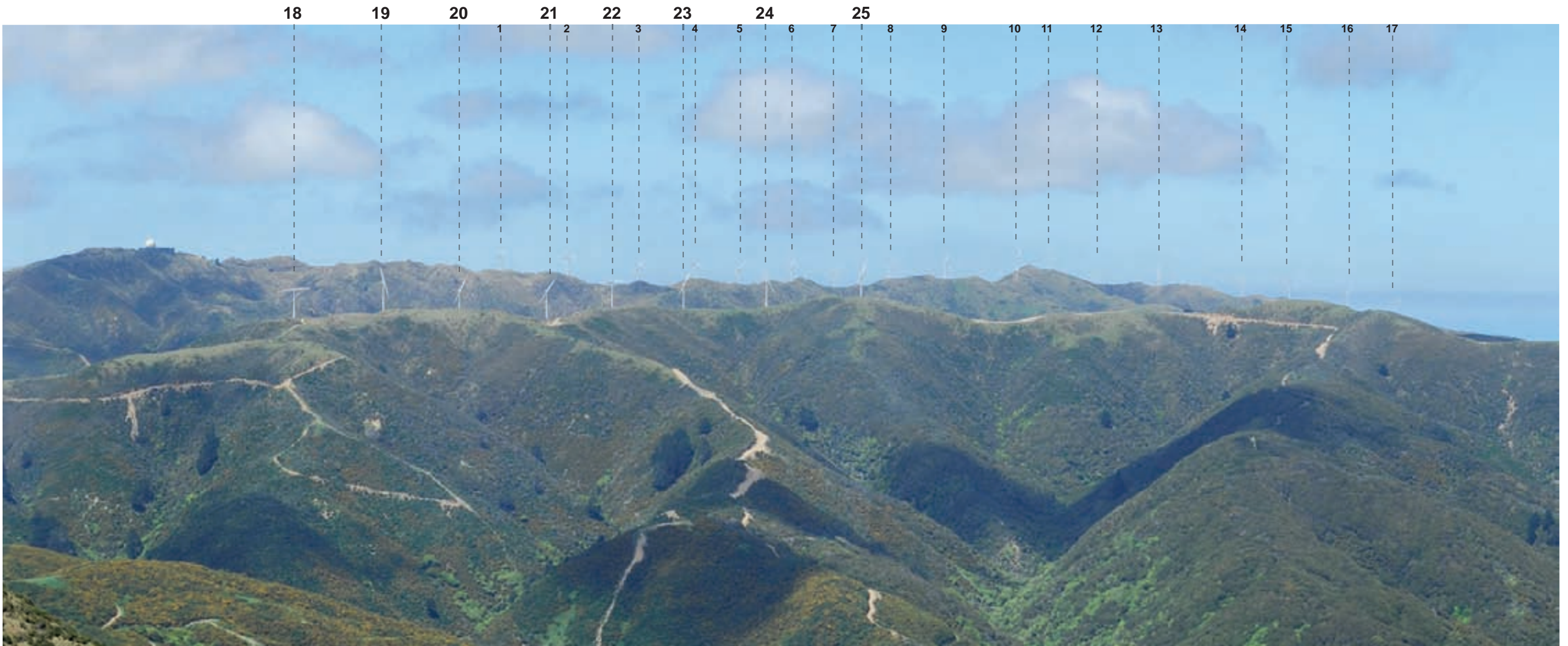
Original Photograph | Charlotte Grant | Nikon D40X DSLR 50mm Lens | 12th November 2008 | 12:16hrs | E1743031 N 5427739 (NZTM) | Elevation 402m | The proposed turbines are approximately 3.3km from viewing location

Photosimulation* | Charlotte Grant | WindPRO | Photoshop CS2
 * Photosimulations are a graphic illustration and should only be used as a guide to field observation.

Photograph simulation enlarged by 200%
 Photograph simulations generated with colour rendered as white for enhanced visibility in photograph simulation. Actual turbine colour will be a light blue grey: Jungle Mist™. (Paint specification to follow)

LEGEND

-  Photomontage Viewpoint
-  Area of enlargement from original photograph simulation

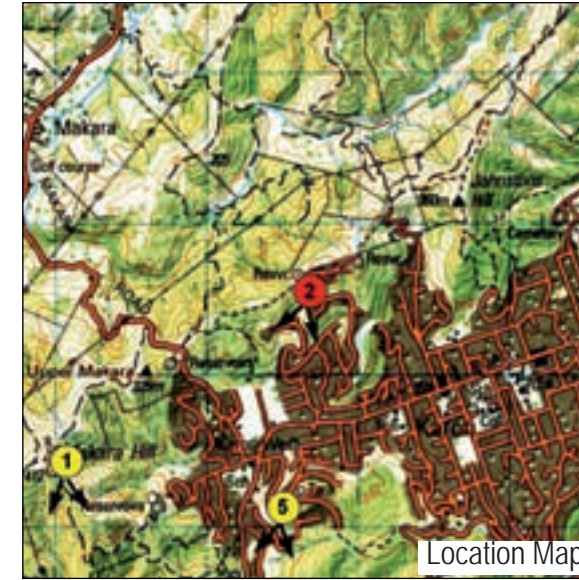


PHOTOGRAPH SIMULATION 1A - PROPOSED VIEW ENLARGED (FROM MAKARA HILL LOOKING SOUTHEAST TOWARDS PROPOSED WIND TURBINES)

LONG GULLY WIND FARM

Photograph Simulations | Further Clarification of Turbine Locations | Job Number 2700 | May 2009







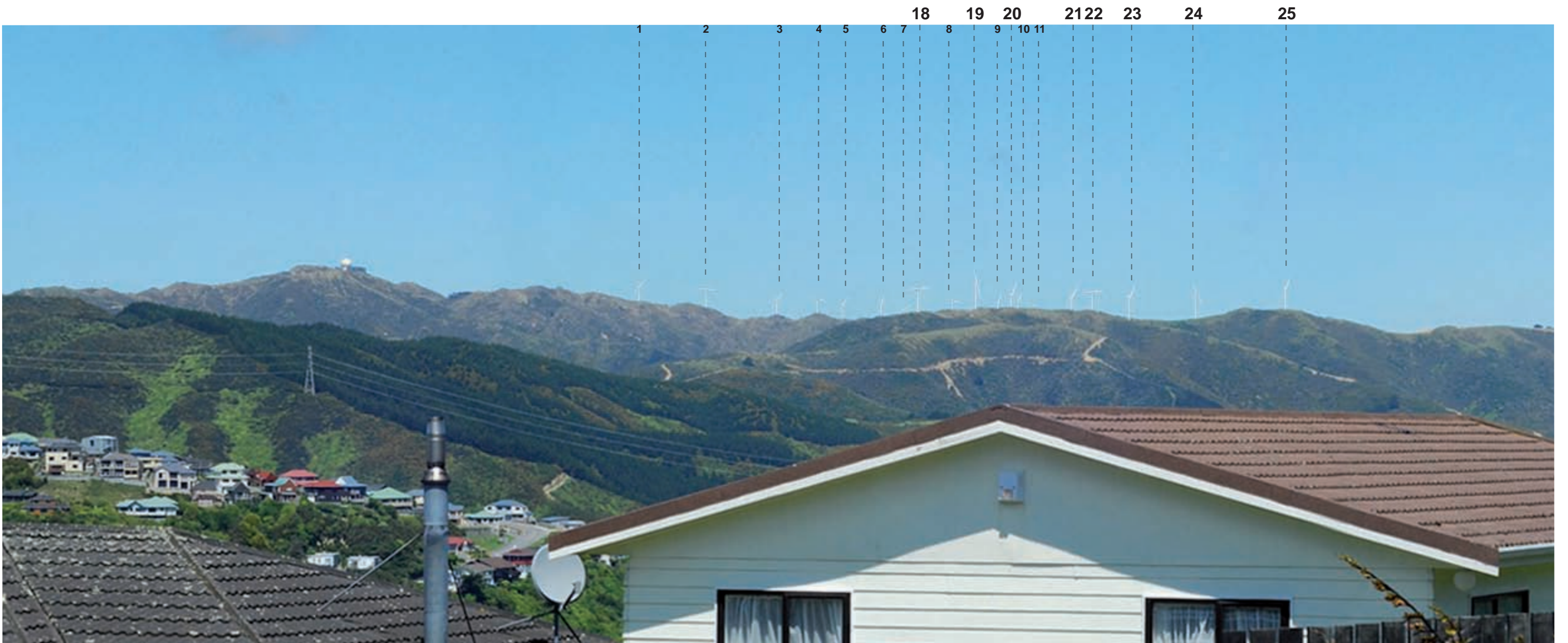
Original Photograph | Charlotte Grant | Nikon D40X DSLR 50mm Lens | 12th November 2008 | 13:02hrs | E1744642 N5428858 (NZTM) | Elevation 263m | The proposed turbines are approximately 4.3km from viewing location

Photosimulation* | Charlotte Grant | WindPRO | Photoshop CS2
 * Photosimulations are a graphic illustration and should only be used as a guide to field observation.

Photograph simulation enlarged by 250%
 Photograph simulations generated with colour rendered as white for enhanced visibility in photograph simulation. Actual turbine colour will be a light blue grey: Jungle Mist™. (Paint specification to follow)

LEGEND

-  Photomontage Viewpoint
-  Area of enlargement from original photograph simulation



PHOTOGRAPH SIMULATION 2A - PROPOSED VIEW ENLARGED (FROM MONTGOMERY AVENUE, KARORI NORTH LOOKING SOUTH TOWARDS PROPOSED WIND TURBINES)

LONG GULLY WIND FARM

Photograph Simulations | Further Clarification of Turbine Locations | Job Number 2700 | May 2009







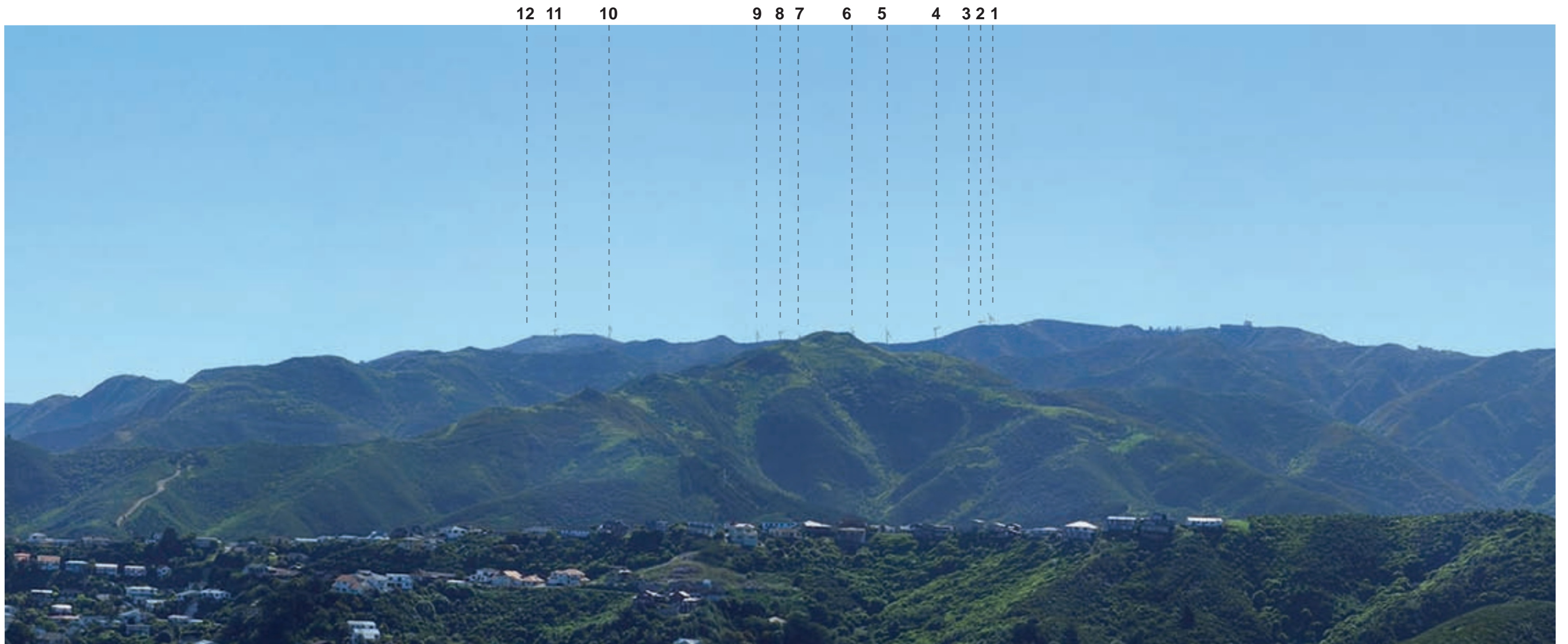
Original Photograph | Charlotte Grant | Nikon D40X DSLR 50mm Lens | 12th November 2008 | 16:20hrs | E1749049 N5422138 (NZTM) | Elevation 108m | The proposed turbines are approximately 5km from viewing location

Photosimulation* | Charlotte Grant | WindPRO | Photoshop CS2
 * Photosimulations are a graphic illustration and should only be used as a guide to field observation.

Photograph simulation enlarged by 150%
 Photograph simulations generated with colour rendered as white for enhanced visibility in photograph simulation. Actual turbine colour will be a light blue grey: Jungle Mist™. (Paint specification to follow)

LEGEND

-  Photomontage Viewpoint
-  Area of enlargement from original photograph simulation



PHOTOGRAPH SIMULATION 3A - PROPOSED VIEW ENLARGED (FROM BUCKLEY ROAD, ISLAND BAY LOOKING WEST TOWARDS PROPOSED TURBINES)

LONG GULLY WIND FARM

Photograph Simulations | Further Clarification of Turbine Locations | Job Number 2700 | May 2009







Original Photograph | Charlotte Grant | Nikon D40X DSLR 50mm Lens | 12th November 2008 | 16:41hrs | E1746006 N 5425222 (NZTM) | Elevation 370m | The proposed turbines are approximately 2.2km from viewing location

Photosimulation* | Charlotte Grant | WindPRO | Photoshop CS2
 * Photosimulations are a graphic illustration and should only be used as a guide to field observation.

Photograph simulation is NOT enlarged
 Photograph simulations generated with colour rendered as white for enhanced visibility in photograph simulation. Actual turbine colour will be a light blue grey: Jungle Mist™. (Paint specification to follow)

LEGEND

-  Photomontage Viewpoint
-  Area of enlargement from original photograph simulation

1 2 3/4

23/24 22/25 21/20 19 18

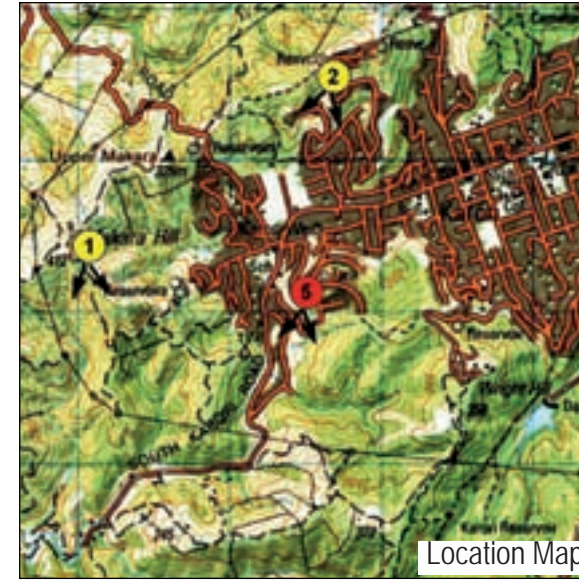


PHOTOGRAPH SIMULATION 4A - PROPOSED VIEW (FROM HAWKINS HILL ACCESS ROAD, NEXT TO BROOKLYN TURBINE LOOKING SOUTH SOUTHWEST TOWARDS PROPOSED WIND TURBINES)

LONG GULLY WIND FARM

Photograph Simulations | Further Clarification of Turbine Locations | Job Number 2700 | May 2009







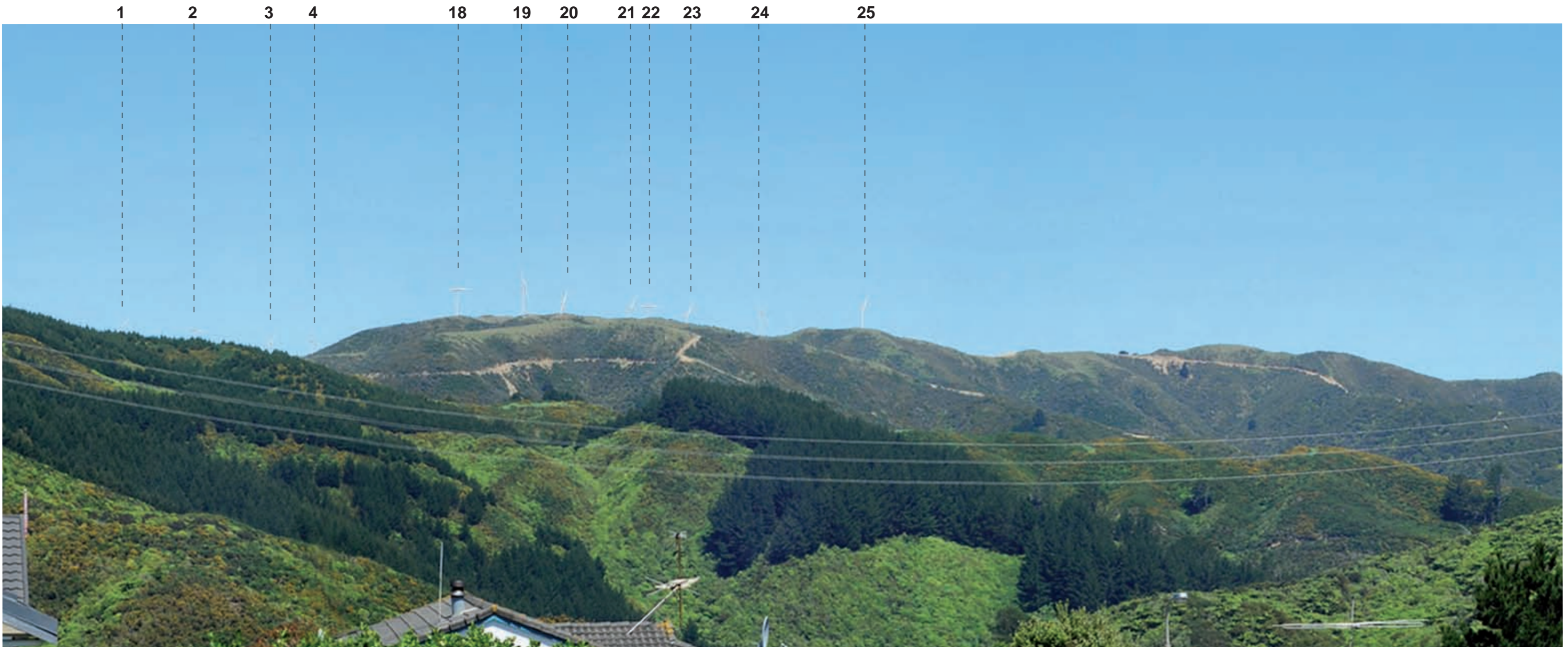
Original Photograph | Charlotte Grant | Nikon D40X DSLR 50mm Lens | 12th November 2008 | 13:28hrs | E1744466 N5427433 (NZTM) | Elevation 213m | The proposed turbines are approximately 2.9km from viewing location

Photosimulation* | Charlotte Grant | WindPRO | Photoshop CS2
 * Photosimulations are a graphic illustration and should only be used as a guide to field observation.

Photograph simulation enlarged by 200%
 Photograph simulations generated with colour rendered as white for enhanced visibility in photograph simulation. Actual turbine colour will be a light blue grey: Jungle Mist™. (Paint specification to follow)

LEGEND

-  Photomontage Viewpoint
-  Area of enlargement from original photograph simulation



PHOTOGRAPH SIMULATION 5A - PROPOSED VIEW ENLARGED (FROM WOODHOUSE AVENUE, KARORI SOUTH LOOKING SOUTH TOWARDS PROPOSED WIND TURBINES)

LONG GULLY WIND FARM

Photograph Simulations | Further Clarification of Turbine Locations | Job Number 2700 | May 2009







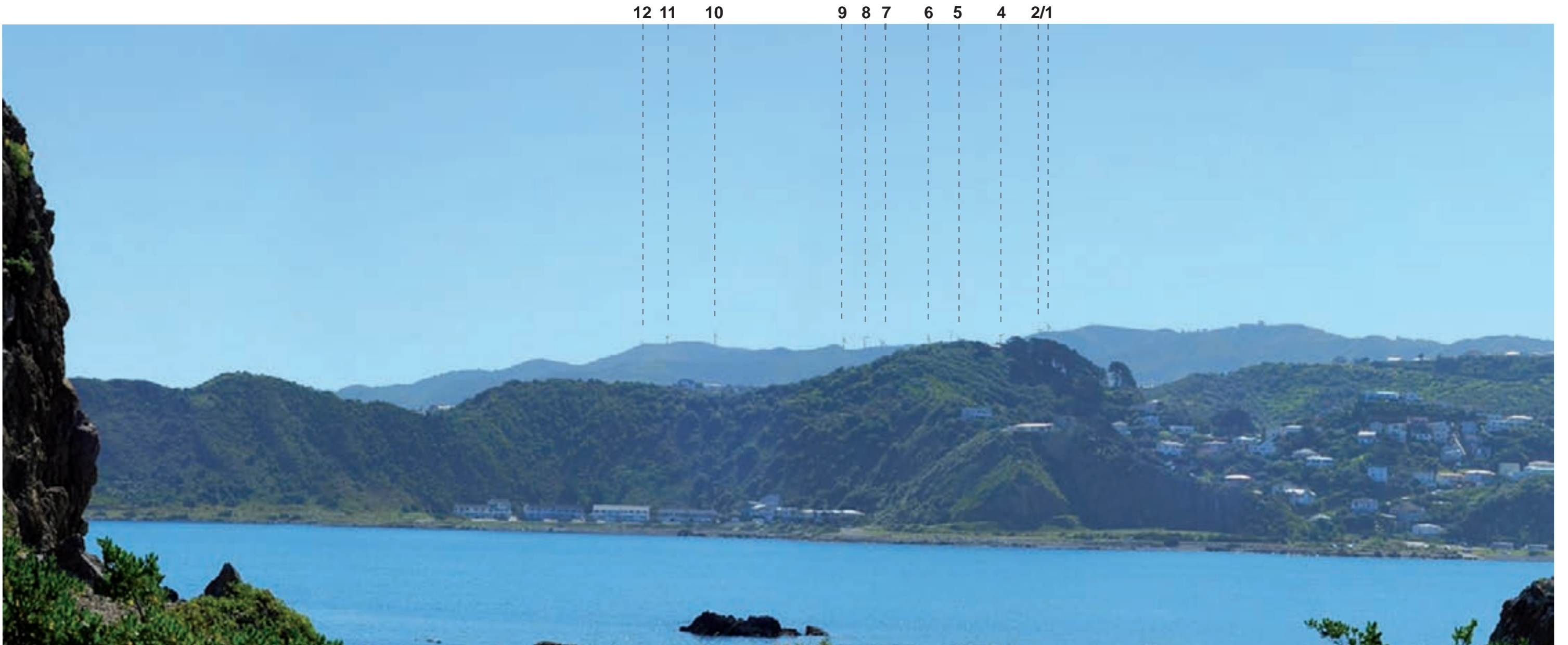
Original Photograph | Charlotte Grant | Nikon D40X DSLR 50mm Lens | 12th November 2008 | 15:45hrs | E1751492 N5421766 (NZTM) | Elevation 3m | The proposed turbines are approximately 7.5km from viewing location

Photosimulation* | Charlotte Grant | WindPRO | Photoshop CS2
 * Photosimulations are a graphic illustration and should only be used as a guide to field observation.

Photograph simulation enlarged by 200%
 Photograph simulations generated with colour rendered as white for enhanced visibility in photograph simulation. Actual turbine colour will be a light blue grey: Jungle Mist™. (Paint specification to follow)

LEGEND

-  Photomontage Viewpoint
-  Area of enlargement from original photograph simulation



PHOTOGRAPH SIMULATION 6A - PROPOSED VIEW ENLARGED (FROM MOA POINT LOOKING WEST TOWARDS PROPOSED WIND TURBINES)

LONG GULLY WIND FARM

Photograph Simulations | Further Clarification of Turbine Locations | Job Number 2700 | May 2009

