



Original Photograph | Charlotte Grant | Nikon D40X DSLR 50mm Lens |
12th November 2008 | 16:41hrs | E1746006 N 5425222 (NZTM) |
Elevation 370m

Recommended reading distance of this photograph is approximately
400mm.

LEGEND



SITE PHOTOGRAPH 4 - EXISTING VIEW (FROM HAWKINS HILL ACCESS ROAD, NEXT TO BROOKLYN TURBINE LOOKING SOUTH SOUTHWEST)

LONG GULLY WIND FARM

Photograph Simulations | Job Number 2700 | May 2009

isthmus



Original Photograph | Charlotte Grant | Nikon D40X DSLR 50mm Lens | 12th November 2008 | 16:41hrs | E1746006 N 5425222 (NZTM) | Elevation 370m | The proposed turbines are approximately 2.3km from viewing location

Photosimulation* | Charlotte Grant | WindPRO | Photoshop CS2

* Photosimulations are a graphic illustration and should only be used as a guide to field observation.

Recommended reading distance of this photosimulation is approximately 400mm.

Photograph simulations generated with colour rendered as white for enhanced visibility in photograph simulation. Actual turbine colour will be a light blue grey: Jungle Mist™. (Paint specification to follow)

LEGEND



PHOTOGRAPH SIMULATION 4 - PROPOSED VIEW (FROM HAWKINS HILL ACCESS ROAD, NEXT TO BROOKLYN TURBINE LOOKING SOUTH SOUTHWEST TOWARDS PROPOSED WIND TURBINES)

LONG GULLY WIND FARM

Photograph Simulations | Job Number 2700 | May 2009





Location Map

Original Photograph | Charlotte Grant | Nikon D40X DSLR 50mm Lens | 12th November 2008 | 13:28hrs | E1744466 N5427433 (NZTM) | Elevation 213m

Recommended reading distance of this photograph is approximately 400mm.

LEGEND



Photomontage Viewpoint

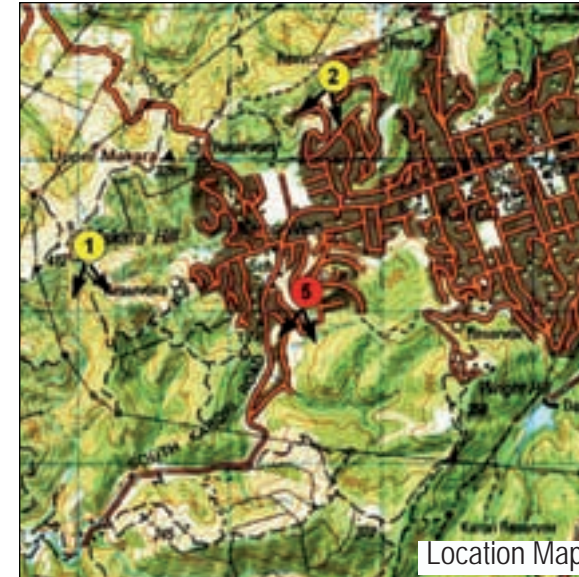


SITE PHOTOGRAPH 5 - EXISTING VIEW (FROM WOODHOUSE AVENUE, KARORI SOUTH LOOKING SOUTH)

LONG GULLY WIND FARM

Photograph Simulations | Job Number 2700 | May 2009





Original Photograph | Charlotte Grant | Nikon D40X DSLR 50mm Lens | 12th November 2008 | 13:28hrs | E1744466 N5427433 (NZTM) | Elevation 213m | The proposed turbines are approximately 2.9km from viewing location

Photosimulation* | Charlotte Grant | WindPRO | Photoshop CS2

* Photosimulations are a graphic illustration and should only be used as a guide to field observation.

Recommended reading distance of this photosimulation is approximately 400mm.

Photograph simulations generated with colour rendered as white for enhanced visibility in photograph simulation. Actual turbine colour will be a light blue grey: Jungle Mist™. (Paint specification to follow)

LEGEND



PHOTOGRAPH SIMULATION 5 - PROPOSED VIEW (FROM WOODHOUSE AVENUE, KARORI SOUTH LOOKING SOUTH TOWARDS PROPOSED WIND TURBINES)



Location Map

Original Photograph | Charlotte Grant | Nikon D40X DSLR 50mm Lens | 12th November 2008 | 15:45hrs | E1751492 N5421766 (NZTM) | Elevation 3m

Recommended reading distance of this photograph is approximately 400mm.

LEGEND

 Photomontage Viewpoint



SITE PHOTOGRAPH 6 - EXISTING VIEW (FROM MOA POINT LOOKING WEST)

LONG GULLY WIND FARM

Photograph Simulations | Job Number 2700 | May 2009





Original Photograph | Charlotte Grant | Nikon D40X DSLR 50mm Lens | 12th November 2008 | 15:45hrs | E1751492 N5421766 (NZTM) | Elevation 3m | The proposed turbines are approximately 7.6km from viewing location

Photosimulation* | Charlotte Grant | WindPRO | Photoshop CS2

* Photosimulations are a graphic illustration and should only be used as a guide to field observation.

Recommended reading distance of this photosimulation is approximately 400mm.

Photograph simulations generated with colour rendered as white for enhanced visibility in photograph simulation. Actual turbine colour will be a light blue grey; Jungle Mist™. (Paint specification to follow)

LEGEND



Photomontage Viewpoint



PHOTOGRAPH SIMULATION 6 - PROPOSED VIEW (FROM MOA POINT LOOKING WEST TOWARDS PROPOSED WIND TURBINES)



Original Photograph | Wade Robertson | Nikon D40X DSLR 50mm Lens |
16th November 2008 | 16:15hrs | E1737707 N5417195 (NZTM) |
Elevation 16m

Recommended reading distance of this photograph is approximately
400mm.

LEGEND

 Photomontage Viewpoint



SITE PHOTOGRAPH 7 - EXISTING VIEW (FROM COOK STRAIT FERRY LOOKING NORTHEAST)



Original Photograph | Wade Robertson | Nikon D40X DSLR 50mm Lens | 16th November 2008 | 16:15hrs | E1737707 N5417195 (NZTM) | Elevation 16m | The proposed turbines are approximately 6.6km from viewing location

Photosimulation* | Charlotte Grant | WindPRO | Photoshop CS2

* Photosimulations are a graphic illustration and should only be used as a guide to field observation.

Recommended reading distance of this photosimulation is approximately 400mm.

Photograph simulations generated with colour rendered as white for enhanced visibility in photograph simulation. Actual turbine colour will be a light blue grey: Jungle Mist™. (Paint specification to follow)

LEGEND



PHOTOGRAPH SIMULATION 7 - PROPOSED VIEW (FROM COOK STRAIT FERRY LOOKING NORTHEAST TOWARDS PROPOSED WIND TURBINES)