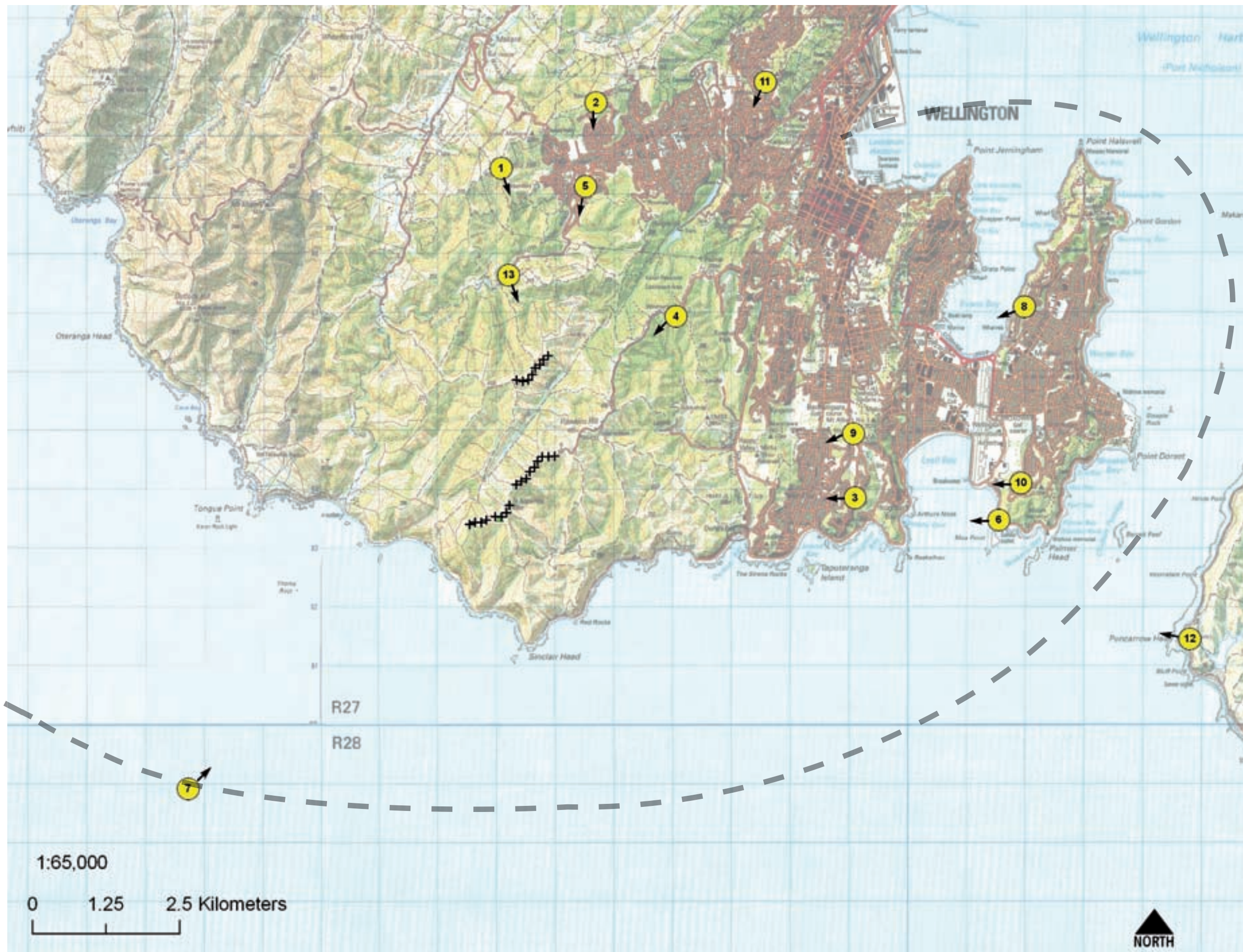





SECTION TWO - SITE PHOTOGRAPHS AND PHOTOGRAPH SIMULATIONS

LONG GULLY WIND FARM MAY 2009 JOB NUMBER 2700





LEGEND

-  Proposed Wind Turbines
-  Viewpoint Location
-  Indicative ferry route

VIEW POINT LOCATIONS

1. MAKARA HILL LOOKING SOUTHEAST
2. MONTGOMERY AVENUE, KARORI NORTH LOOKING SOUTH
3. BUCKLEY ROAD, ISLAND BAY LOOKING WEST
4. HAWKINS HILL ACCESS ROAD, NEXT TO BROOKLYN TURBINE LOOKING SOUTH SOUTHWEST
5. WOODHOUSE AVENUE, KARORI SOUTH LOOKING SOUTH
6. MOA POINT LOOKING WEST
7. COOK STRAIT FERRY LOOKING NORTHEAST
8. MIRAMAR, WALKWAY ENTRANCE LOOKING WEST
9. MOUNT ALBERT RESERVE CARPARK LOOKING SOUTHWEST
10. KEKERENGA STREET, STRATHMORE LOOKING WEST
11. ORANGI KAUPAPA ROAD LOOKING SOUTH SOUTHWEST
12. PENCARROW HEAD LIGHT HOUSE LOOKING WEST
13. SOUTH KARORI ROAD LOOKING SOUTHEAST

LONG GULLY WIND FARM

Photograph Simulations Location Map | Job Number 2700 | May 2009



Location Map

Original Photograph | Charlotte Grant | Nikon D40X DSLR 50mm Lens | 12th November 2008 | 12:16hrs | E1743031 N 5427739 (NZTM) | Elevation 402m

Recommended reading distance of this photograph is approximately 400mm.

LEGEND

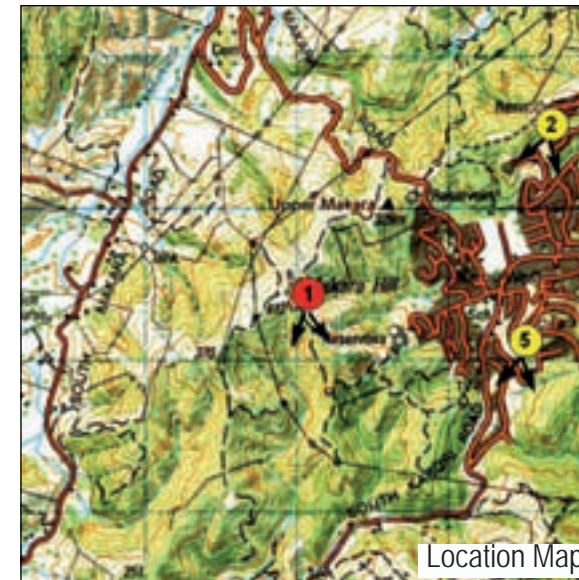


SITE PHOTOGRAPH 1 - EXISTING VIEW (FROM MAKARA HILL LOOKING SOUTHEAST)

LONG GULLY WIND FARM

Photograph Simulations | Job Number 2700 | May 2009





Location Map

Original Photograph | Charlotte Grant | Nikon D40X DSLR 50mm Lens | 12th November 2008 | 12:16hrs | E1743031 N 5427739 (NZTM) | Elevation 402m | The proposed turbines are approximately 3.3km from viewing location

Photosimulation* | Charlotte Grant | WindPRO | Photoshop CS2

* Photosimulations are a graphic illustration and should only be used as a guide to field observation.

Recommended reading distance of this photosimulation is approximately 400mm.

Photograph simulations generated with colour rendered as white for enhanced visibility in photograph simulation. Actual turbine colour will be a light blue grey: Jungle Mist™. (Paint specification to follow)

LEGEND



PHOTOGRAPH SIMULATION 1 - PROPOSED VIEW (FROM MAKARA HILL LOOKING SOUTHEAST TOWARDS PROPOSED WIND TURBINES)

LONG GULLY WIND FARM

Photograph Simulations | Job Number 2700 | May 2009





Original Photograph | Charlotte Grant | Nikon D40X DSLR 50mm Lens | 12th November 2008 | 13:02hrs | E1744642 N5428858 (NZTM) | Elevation 263m

Recommended reading distance of this photograph is approximately 400mm.

LEGEND

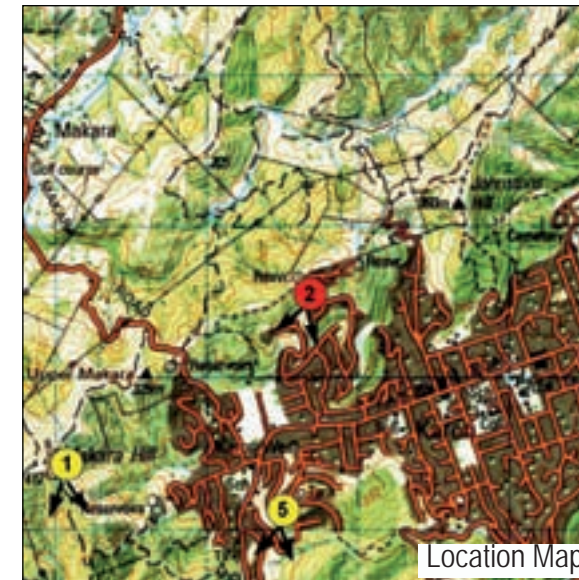


SITE PHOTOGRAPH 2 - EXISTING VIEW (FROM MONTGOMERY AVENUE, KARORI NORTH LOOKING SOUTH)

LONG GULLY WIND FARM

Photograph Simulations | Job Number 2700 | May 2009





Original Photograph | Charlotte Grant | Nikon D40X DSLR 50mm Lens | 12th November 2008 | 13:02hrs | E1744642 N5428858 (NZTM) | Elevation 263m | The proposed turbines are approximately 4.4km from viewing location

Photosimulation* | Charlotte Grant | WindPRO | Photoshop CS2

* Photosimulations are a graphic illustration and should only be used as a guide to field observation.

Recommended reading distance of this photosimulation is approximately 400mm.

Photograph simulations generated with colour rendered as white for enhanced visibility in photograph simulation. Actual turbine colour will be a light blue grey: Jungle Mist™. (Paint specification to follow)

LEGEND



PHOTOGRAPH SIMULATION 2 - PROPOSED VIEW (FROM MONTGOMERY AVENUE, KARORI NORTH LOOKING SOUTH TOWARDS PROPOSED WIND TURBINES)

LONG GULLY WIND FARM

Photograph Simulations | Job Number 2700 | May 2009





Location Map

Original Photograph | Charlotte Grant | Nikon D40X DSLR 50mm Lens | 12th November 2008 | 16:20hrs | E1749049 N5422138 (NZTM) | Elevation 108m

Recommended reading distance of this photograph is approximately 400mm.

LEGEND

 Photomontage Viewpoint



SITE PHOTOGRAPH 3 - EXISTING VIEW (FROM BUCKLEY ROAD, ISLAND BAY LOOKING WEST)

LONG GULLY WIND FARM

Photograph Simulations | Job Number 2700 | May 2009





Location Map

Original Photograph | Charlotte Grant | Nikon D40X DSLR 50mm Lens | 12th November 2008 | 16:20hrs | E1749049 N5422138 (NZTM) | Elevation 108m | The proposed turbines are approximately 5.1km from viewing location

Photosimulation* | Charlotte Grant | WindPRO | Photoshop CS2

* Photosimulations are a graphic illustration and should only be used as a guide to field observation.

Recommended reading distance of this photosimulation is approximately 400mm.

Photograph simulations generated with colour rendered as white for enhanced visibility in photograph simulation. Actual turbine colour will be a light blue grey: Jungle Mist™. (Paint specification to follow)

LEGEND



PHOTOGRAPH SIMULATION 3 - PROPOSED VIEW (FROM BUCKLEY ROAD, ISLAND BAY LOOKING WEST TOWARDS PROPOSED TURBINES)

LONG GULLY WIND FARM

Photograph Simulations | Job Number 2700 | May 2009

